

# Balancing Act

- New program
- High population density
- Competing interests
  - Boating
  - Fishing
  - Shellfishing
  - Home-owner views
  - Natural resources
- Program costs
- Burdens vs Protection of our trust resources

Our shared goal is a successful shellfish aquaculture program!



# When?

Goal is to have regulation in place & leasing started in second half of 2014

## Complex & Multifaceted Issue

- Regulations
- Internal & external permitting
- Biological sampling methods & protocols
- Boundary surveys

Under Delaware's APA, simple regulations typically take about 5 months from publication of SAN to publication of final regulation

Workshop(s) is prior to the formal regulatory process

- to help guide us in regulation development
- Provides insights from diverse stakeholder groups



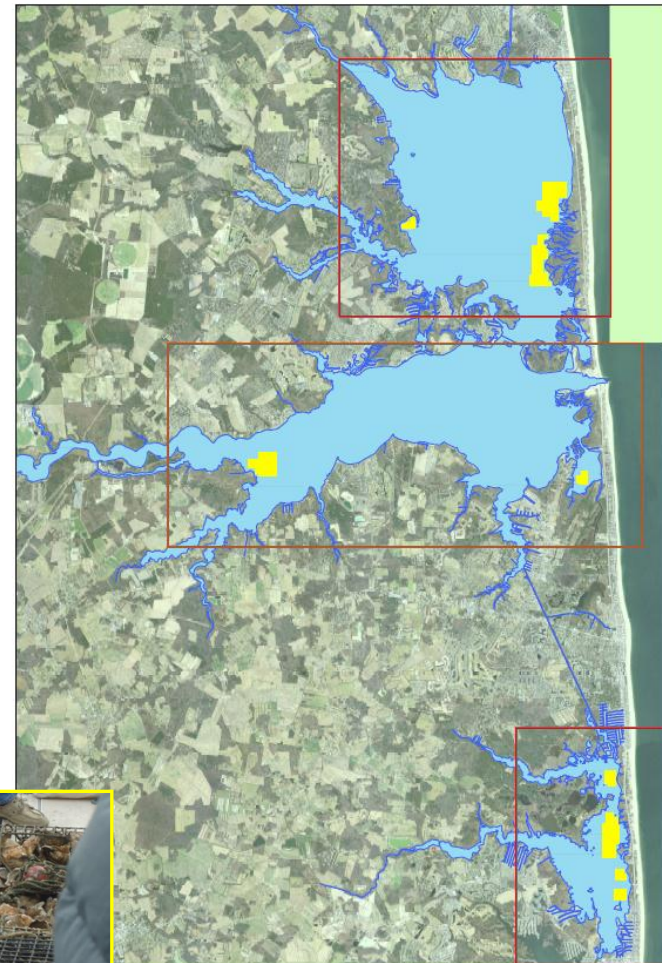
# Where?

Code specifies that we may lease up to:

- 5% of Indian River & Rehoboth Bay
- 10% of Little Assawoman Bay
- In areas compatible with:
  - Comm Fishing & Shellfishing
  - Rec Fishing & Shellfishing
  - Boating navigation
  - Public water access & use
  - Native biota
- Aquaculture can't occur in shellfish closures
  - 43% of IR is Restricted
  - Further focuses the "where"
- Enforceability
- **Shellfish Aquaculture Development Areas (SADA)**
  - CIB's Tiger Team
- Need: Your thoughts
  - Stations with maps

## Proposed Shellfish Aquaculture Development Areas (SADA) in the Inland Bays

These SADA were developed by the Center for the Inland Bays' Shellfish Aquaculture Tiger Team





# Who?

Anyone may apply, and we envision ...

- An operations plan
- Evidence of financial capability
- Liability Insurance
- Bond
  
- Streamline the application process for SADA
  - The Department acts as the agent for USACE permit to allow for an expedited process
  - Seeking SADA exemption from Wetlands & Subaqueous Lands (7 Del Code 7205)
  
- Outside a SADA more burden is placed on the applicant to demonstrate they've met the conditions of the code
  - USACE and Wetlands permits
  
- Biological Sampling
  - Working on a method and protocols for biological sampling
  - Viable hard clam population



# What?

## Eastern oyster (*Crassostrea virginica*)

- Rehoboth Bay
- Indian River Bay
- Little Assawoman Bay

## Hard clams (*Mercenaria mercenaria*)

- Little Assawoman Bay
- **Native to Delaware**
- **Demonstrated success**



# How?

Container-only aquaculture for oysters

- Bottom cages

Predator exclusion mesh for hard clams

